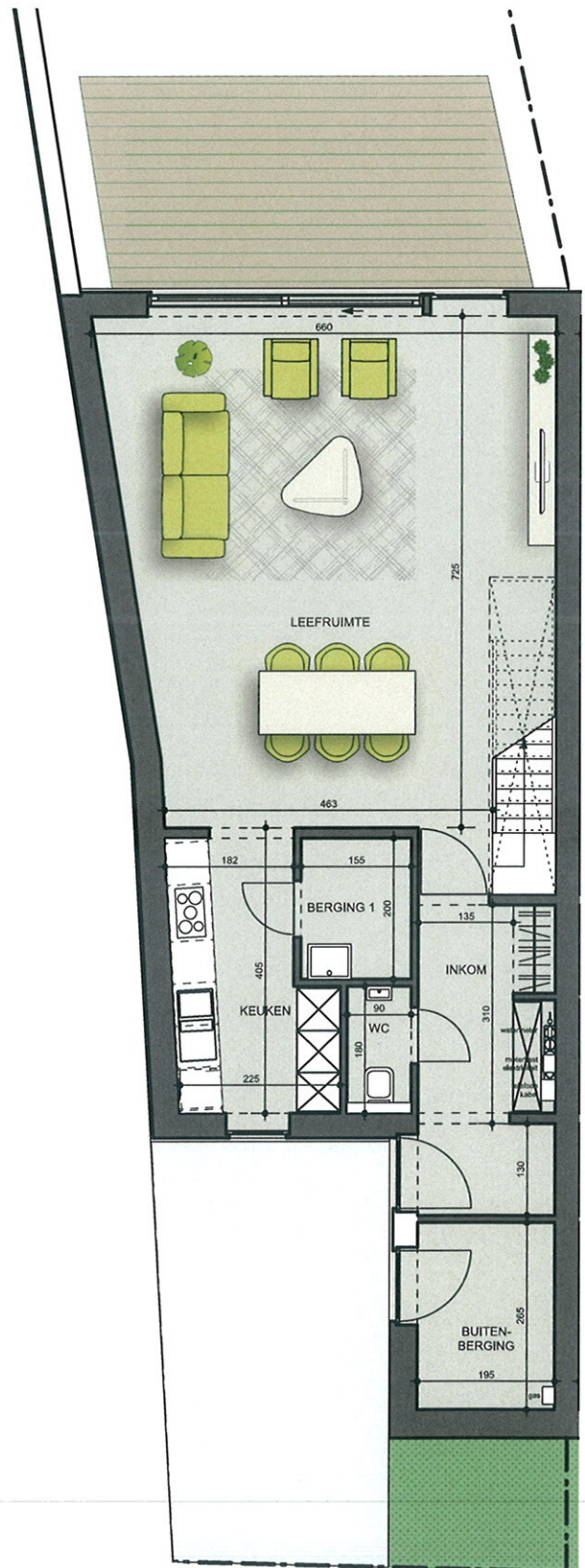
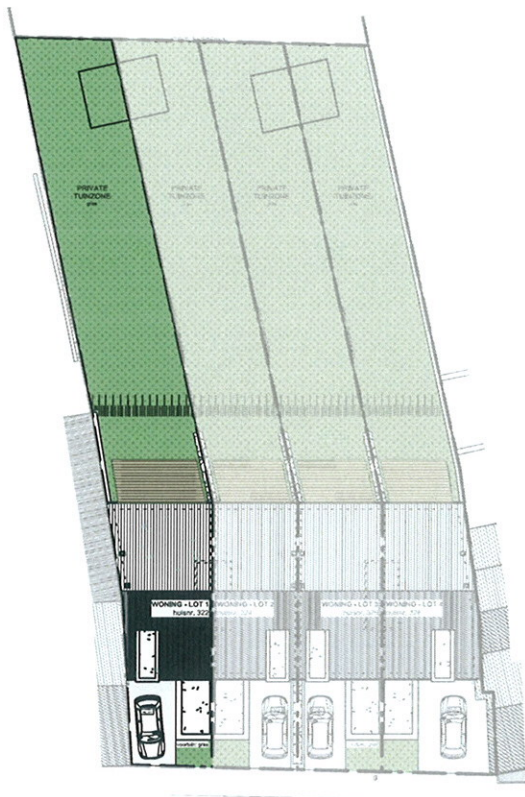


WONING 1

netto opp.: 204,96 m²

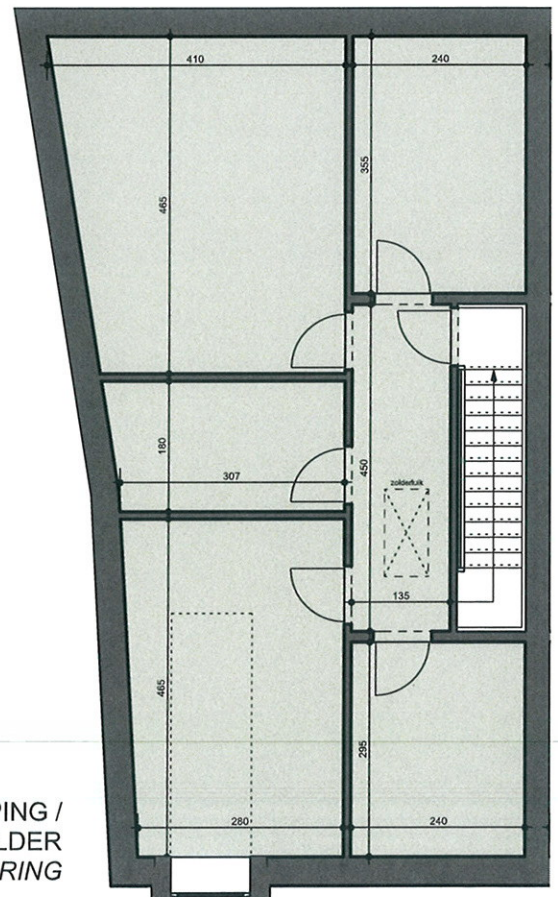
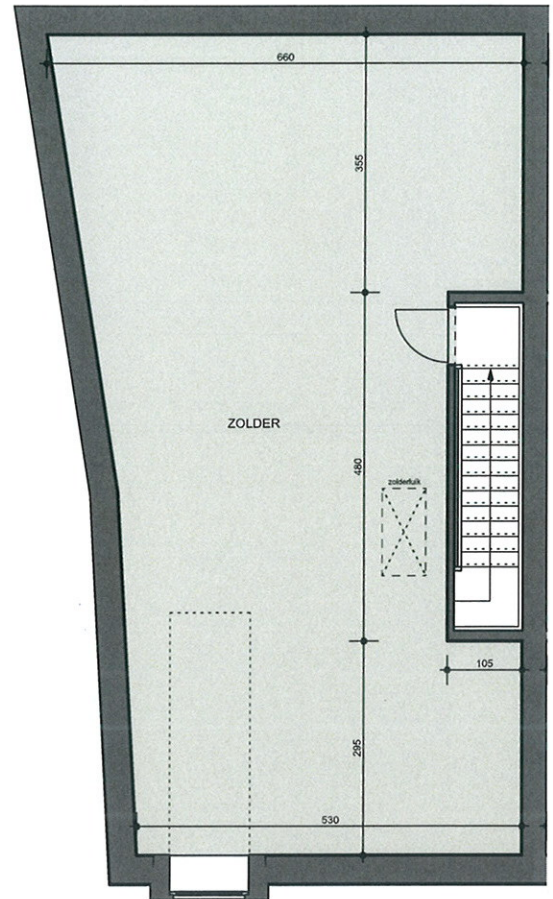
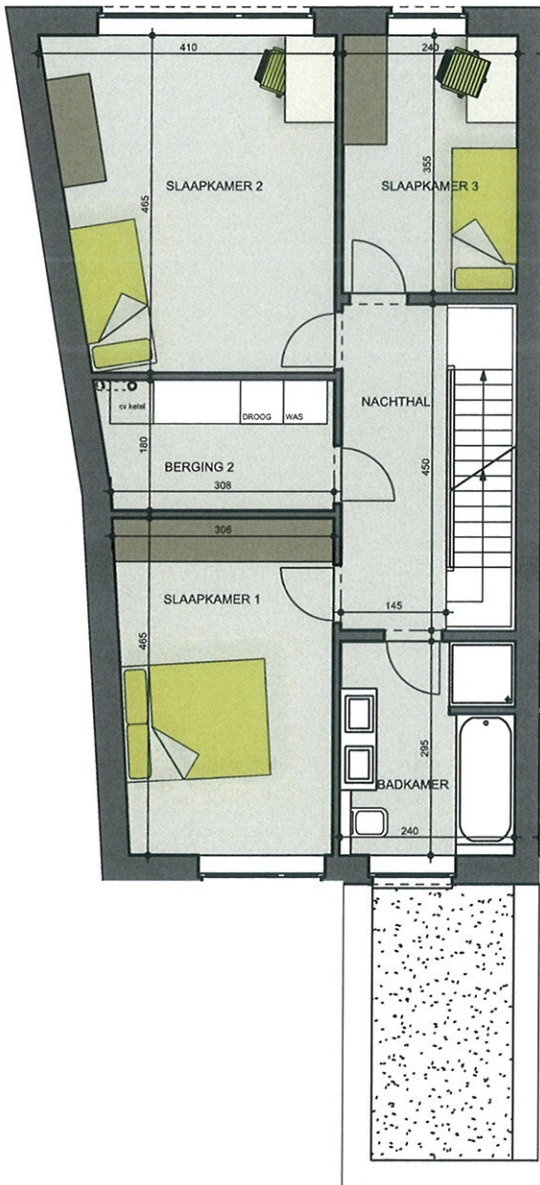
- begane grond: 73,78 m²
- eerste verdieping: 65,59 m²
- tweede verdieping: 65,59 m²
(opp. voorgevel tot achtergevel)

terreinopp.: 3a33ca



GELIJKVLOERS

TWEEDE VERDIEPING /
ZOLDER



EERSTE VERDIEPING

TWEEDE VERDIEPING /
ZOLDER
OPTIONELE UITVOERING